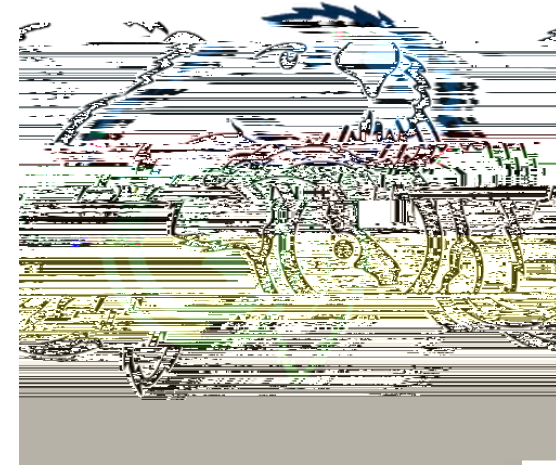


EHARTNELL COLLEGE

MAESTROS
&
Teacher
Pathway
Program (TPP)-
Cohort



Making Accessible and Effective Systems for Teacher Readiness Outcomes

Goals of TPP and MAESTROs

Improve retention rates for students interested in teacher education

Teacher Pathway Program (TPP)

Geared for students pursuing AA-T in
Elementary Teacher Education

Commitment to attend CSUMB - B.A. in Liberal
Studies

Full-

MAESTROs

Geared for students in ALL teacher pathways
(TK-8, special education, single subject)

Transfer pathways to multiple colleges/universities

Part-time or full-time status

Flexible scheduling - seats are not guaranteed

Opportunities to attend professional development
workshops - not mandatory

Opportunity to be in cohort classes, if space available

Opportunity to on-board with TPP if aligned with
transfer timeline to CSUMB

Advising and mentoring support

Additional TPP perks

\$500 Stipend

iPad

\$\$ for books

CBEST test payment waived

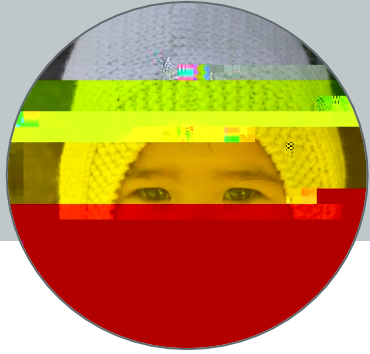
TB / fingerprinting cost waived



On-boarding process for TPP - Cohort

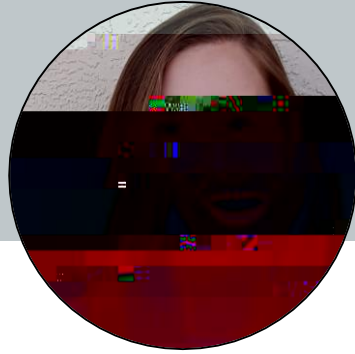
Panther Prep

The TPP/MAESTROs Team



Jihan Ejan

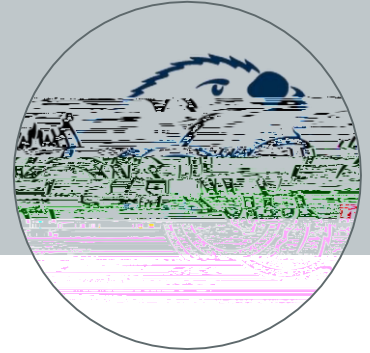
Develop course sequencing for cohort
Ensure students make academic progress
Make sure grant activities are achieved



Kelsey Wettach

Program Coord.

Assist in tracking student progress and connecting students to resources
New hire for spring semester



CSUMB Team

Deedee Perez-Granados (LS Chair)
Erika Miguel - LS Advisor
Antonio Gallardo -

How can Counselors Assist?

Referrals to Jihan and
Kelsey for TPP application

Recommend EDU 1 as
Area D course for CSU
transfer (preferably within
1st year if on a 2 year plan)

Electives: ART 10, TAC 1
and MUS 1A (if going to
CSUMB for liberal studies)

Upcoming Informational Session

MAIN CAMPUS - rm: B110

Feb 4: Mon: 11-12pm OR 2-3pm

Feb 5: Tues: 1-2pm OR 3-4pm

Feb 7: Thurs: 2-3pm

KING CITY - rm: 108B

February 5, 2019

10:30 am and 2:00 pm



A vibrant, multi-colored graphic design for a business presentation. The design features a mix of purple, blue, green, and yellow. At the top, there is a photograph of a man and a woman smiling. Below this, there is a large, stylized graphic of a globe or a network. The text "STO FIT YOUR NEEDS" is prominently displayed in the center. Below this, there are two sections: "MAL5TRGS" and "TRP COLORT". The bottom section features a green background with white text that reads "with peer group in same". The overall design is modern and eye-catching.

CONTACT US

Jihan Ejan

jejan@hartnell.edu

Library, Room A150

Main campus AND King City 2nd floor

Kelsey Wettach

kwettach@hartnell.edu

Room 214B

King City, 2nd floor

www.hartnell.edu/teach

teach@hartnell.edu



“To educate a child is to turn walls into doors.”

Any Questions?

